



Westside, Ravenscourt Park, W6  
Guide Price £795,000

**WHITMAN & CO.**  
SALES · LETTINGS · COMMERCIAL



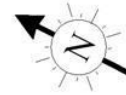
A rarely available spacious and light penthouse apartment with stunning views over Ravenscourt Park set within this private gated development located a short walk from the extensive shopping and restaurant facilities along King Street. The accommodation of 903 sqft comprises a spacious (23'8x13'5) dual aspect open plan living area with panoramic views to the East over Ravenscourt Park, a fitted kitchen, a primary bedroom with ensuite shower room, a second spacious double bedroom, a main bathroom, large entrance hallway with storage, lift access, allocated off-street parking and a share in the freehold. The property is ideally located for the sports and recreational facilities of Ravenscourt Park and the bars, restaurants and shops on both King Street and Chiswick High Road. Transport links include Stamford Brook and Ravenscourt Park stations, local bus routes and the A4/M4 for access into and out of London by car. No onward chain.



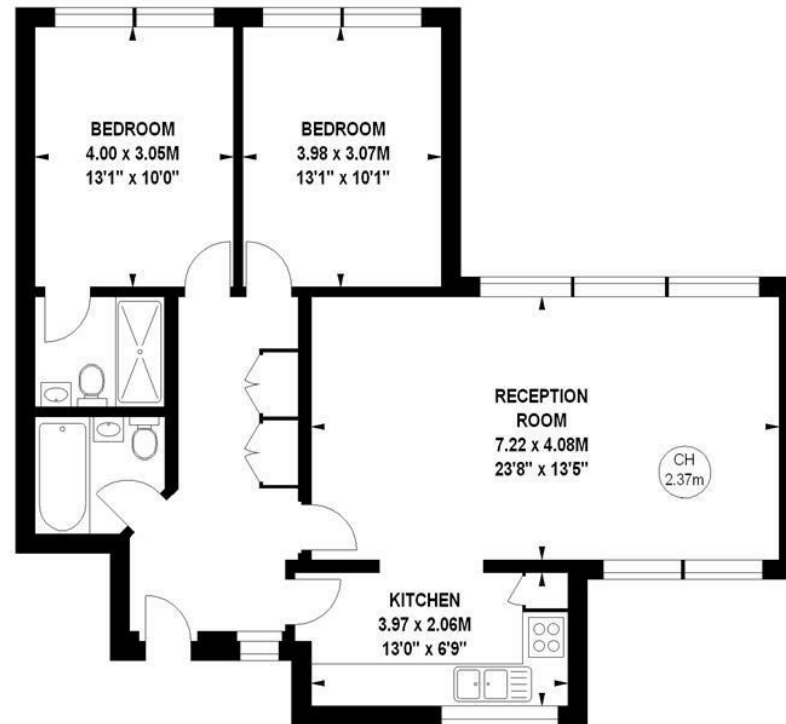
# Westside, W6

Approximate gross internal area

83.89 sq m / 903 sq ft



Key :  
CH - Ceiling Height



## Fourth Floor

The floor plan is not to scale and measurements and areas shown are approximate and therefore should be used for illustrative purposes only.

The plan has been prepared in accordance with the RICS code of Measuring Practice and whilst we have confidence in the information produced, it must not be relied on.

If there is any aspect of particular importance, you should carry out or commission your own inspection of the property.

Copyright of FeaturePRO.

- Top floor apartment on Ravenscourt Park
- 23'8x13'5 Dual aspect reception room
- Two beds/two baths

- Gated development with off street parking
- Fabulous far reaching views
- No onward chain

Tenure - Leasehold + share of freehold  
Lease length - X Years remaining  
Ground Rent - £150 pa  
Service Charge - £3000.50 pa  
Local authority - Hammersmith and Fulham  
Council tax - Band F

